



Operator (Report): ZetaView

Video Operator: ZetaView

Sample Parameters

Sample Name: I-EV-9.4
Comment: PS100nm 1:250,000, Sample Remarks0:
Sample Remarks1:
Sample Remarks2:
Electrolyte:
Temperature: 28.00 °C sensed
pH 7.0 entered
Conductivity: 27.52 µS/cm sensed

Result (sizes in nm)

	Number	Concentration	Volume
Median (X50)	162.6	162.6	263.5
Span	73.7	73.5	116.3

Concentration: 5.0E+6 Particles / mL
Dilution Factor: 1000
Original Concentration: 5.0E+9 Particles / mL

Quality

Average Counted Particles per Frame: 14
Number of Traced Particles: 191

Measurement Parameters

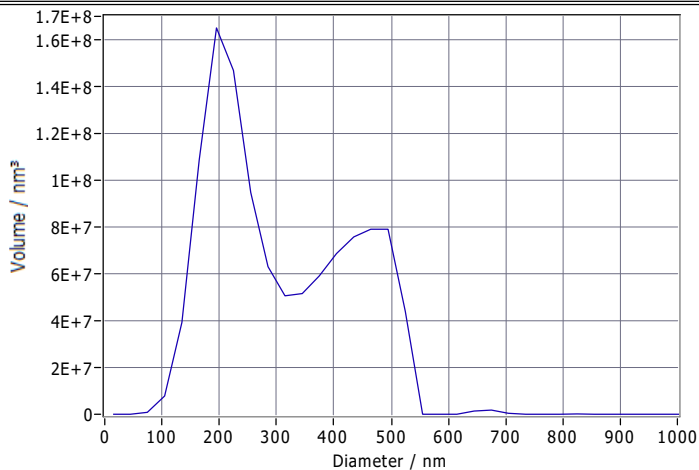
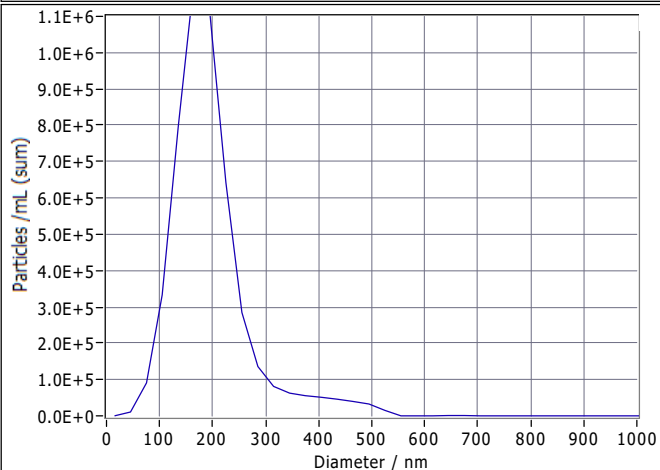
Cell S/N: ZNTA

Measurement Mode: Size Distribution 2 Cycles

11 Positions, 2 Removed for Analysis

Analysis Parameters

Max Area: 1000, Min Area: 10, Min Brightness: 30



Peak Analysis (Concentration)

Diameter / nm	Particles/mL	FWHM / nm	Percentage
186.2	1.1E+6	105.9	100.0

X Values (all sizes are given in nm)

	Number	Concentration	Volume
X10	110.1	110.1	150.2
X50	162.6	162.6	263.5
X90	267.4	267.4	468.3
Span	1.0	1.0	1.2
Mean	195.2	195.2	304.1
StdDev	73.7	73.5	116.3



Comment

(Signature)

Analyzed Video: Z:\Prof Lau Microbiology\Stella\12042022\20220412_0027_I-EV-9.4_size.avi

ZetaVIEW S/N 19-471, Software ZetaView (version 8.05.11), Camera 0.713 µm/px

Experiment: 2022-04-12 14:10, Report: 2022-04-12 14:11